

Systems & Projects

General purpose and Coverage measurement vehicle
I.L.T. Luxemburg

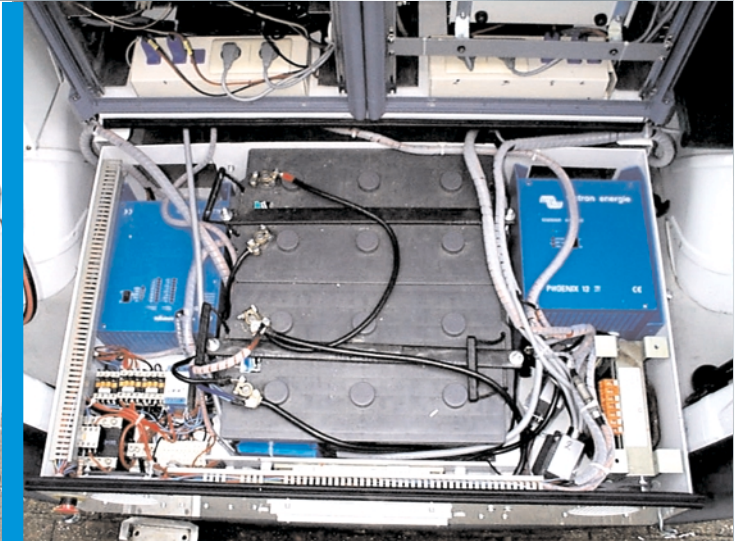




This measurement system has been built in a Mercedes VITO Combi 110D.

It is capable of doing

- GSM Coverage measurement (using a TS9955 coverage measurement system),
- Radio location (using an ADD190 direction finding antenna with EBD190 receiver),
- Radio monitoring and analog coverage measurement (using an ESVB Measuring receiver)
- Spectrum monitoring (using an FSEM 30 spectrum analyser).



ROHDE & SCHWARZ

ROHDE & SCHWARZ BELGIUM NV/SA · Excelsiorlaan 31 bus 1 · B-1930 Zaventem
Tel +32 2 721 50 02 · Fax +32 2 725 09 36 · e-mail: info@rsb.rohde-schwarz.com